



CWDM Transmission System (2U+1U)

DONGWE CWDM 2U+1U rack-type CWDM equipment applies the structure that is flexible to expand. It supports modular upgrade online, and realizes the capacity expanding and maintenance easily. The interface of customer service can be optical fiber port and RJ45 Ethernet port.

Product description



Rack-type CWDM System Outline, 2U+1U, 19”

Functional features

- ◆ Large capacity Using optical fiber with single mode at present, the transmission rate of each channel can reach 10Gbit/s. And the total capacity can be 160Gbit/s.
- ◆ 1+1 backup system for heat redundancy of power supply
- ◆ Flexible and transparent access for various rates and services It provides various rate and service accesses which can support the services of Ethernet, PDH, SDH, and CATV and etc.
- ◆ Compared with compact CWDM system 1U, this system expands the capacity more flexible by adding new insertion CWDM module cards.
- ◆ The interfaces of the plug and play customer service module cards can be both optical fiber port and RJ 45 Ethernet port. Customers can choose its type flexibly according to their requirement.
- ◆ Support single fiber, Bidi and dual fiber, Bidi transmission at the COM port of this system.
- ◆ Flexible network management configuration and management mode
- ◆ This system has high efficiency and eminence performance to protect customers' benefit and investment.

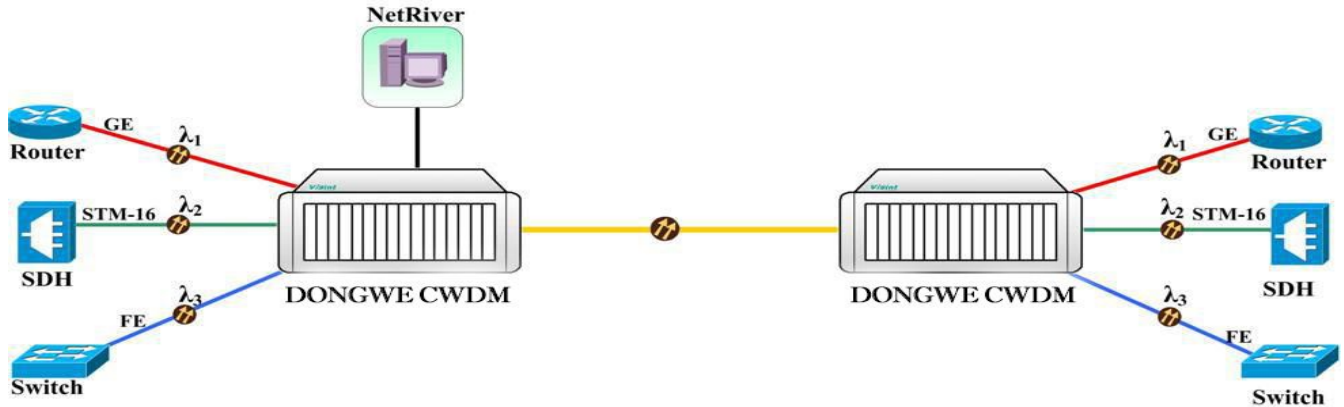
**Technical parameter**

System Parameter		Technical Index
Max Capacity of Each System		4-channel (4 X 10G), 8- channel (8 X 10G),16- channel (16 X 10G)
Wavelength Range		Compliant with standard of ITU-I G.695
Access Service Type		PDH ,ATM STM-64/STM-16/STM-4/STM-1 OC-192/OC-48/OC-12/OC-32 FE, GE, 10GE FICON/ESCON/FIBER Channel
Transmission Mode at Optical Interface		Adopts 2R transmission mode, each channel supporting transparent transmission at a rate below 2.5Gbit/s. Adopts 3R transmission mode, each channel supports the rate such as 155Mbit/s, 622Mbit/s, 1.25Gbit/s, 2.5Gbit/s, and 10Gbit/s (Optional).
Topological Structure		Point to point; point to multi-points; chain; ring; single fiber Bidirectional
Optical Fiber Type		G.652; G.653; G.655
Management Mode		CLI , TELNET,SNMP, WEB
Dimension	2U OTU	25 (W) × 88 (H) × 116 (D) (mm)
	1U Passive Chassis	440 (W) × 44 (H) × 350 (D) (mm)
	2U Chassis	428 (W) × 88 (H) × 322 (D) (mm)
Environment Requirement	Operating Temperature	-10°C ~ 60°C
	Storage Temperature	-40°C ~ 80°C
	Relative Humidity	5% ~ 95% (non-condensing)
Power Supply(Standard)		220 V/AC, 50Hz; -48 V/DC(optional)
Safety and EMC		Compliant with standard of FCC, UL, CE, TUV, CSA
Consumption		≤75W



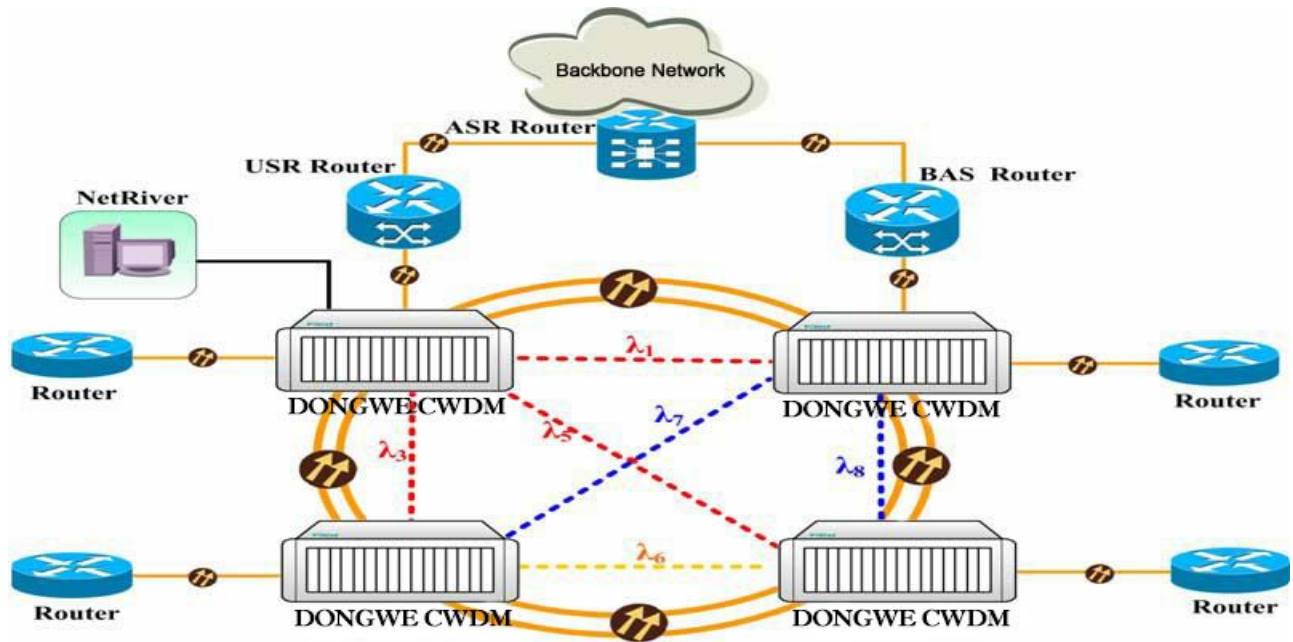
Typical Application

◆ Point to point



In the topology of point to point, the equipment multiplexes bandwidth which is several times than the original ones through limited optical fiber resources to realize the bidirectional gather of services between the two points.

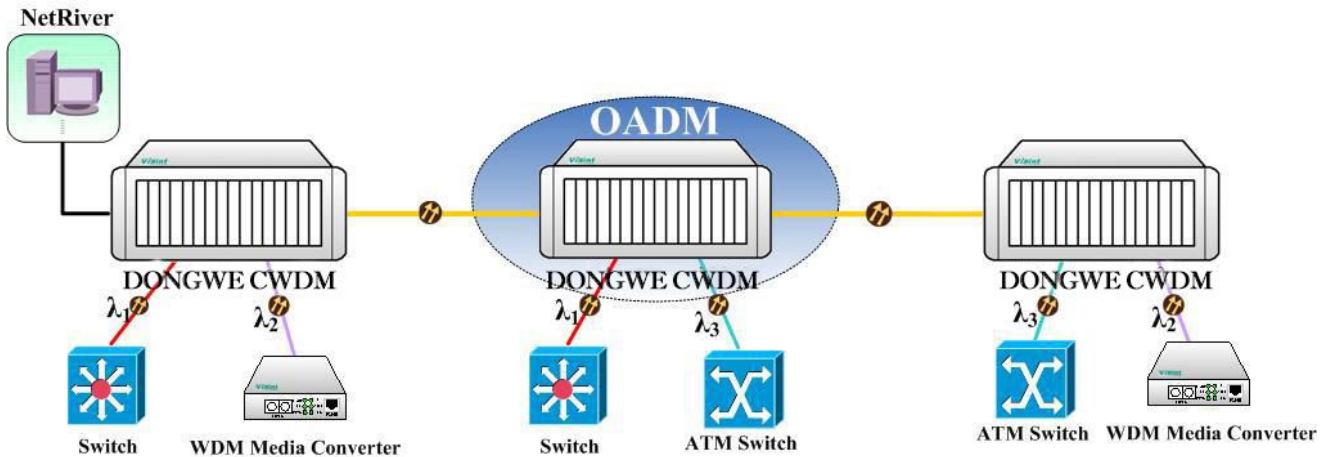
◆ Ring



It uses multi-wavelength –channels to form a ring networking topology, which can realize the symmetry services over the dual fiber, intercommunicating without interruption.



◆ Chain Networking



It uses CWDM&DWDM equipment and OADM which can add or drop several services, to construct chain metropolitan area network.

Ordering information:

CWDM Optical Transmission System (2U+1U)
2U OTU Card (Active part)

DW-OTU	X	X	X	X
	Rate(1=2R/155M, 2=2R/1.25G, 3=2R/2.5G, 4=3R/155M, 5=3R/1.25G, 6=3R/2.5G, 8=10G)	Transmission Distance (1=30km,2=50km,3=80km,4=100km,5=120km,6=60km)	Customer interface(1=single mode, 2=multi-mode)	Wavelength(27=1270,29=1290...)

Passive CWDM MUX/DEMUX, 1U

DW-ODM	X	X	X	XX	X	XX
	Number of CWDM channels (from 1 to 16)	Number of Channels (from 1 to 16)	Package Mode(1=outdoor,2=indoor, 3=1U)	Fiber Diameter(09=0.9mm,20=2mm,30=3mm)	Connector (0=no,1=FC/UPC,2=FC/APC,3=SC/UPC,4=SC/APC,5=LC/UPC,6=LC/APC,X=customized)	Output Length(10=1.0m,12=1.2m,15=1.5m)